



**Eastern Oklahoma Fabrication, LLC.**  
**27355 Highway 112, Cameron, OK 74932**  
**Ph. 918-654-7344**

For more information contact our office or Email:  
[info@eastokfab.com](mailto:info@eastokfab.com)

### **Precision Machine Solutions: Expertly Crafted Parts for Your Industry**

EOF's machine shop caters to a diverse range of industries, such as oil & gas, power generation, manufacturing, food processing, heavy equipment, agriculture, and many more. Our expertise includes manufacturing both large and small parts and completing various types of jobs, from production runs to one-offs and prototypes. Additionally, we offer after-hours and emergency services to our valued clients.

**Our Shop Capability Includes Custom  
Fabrication, Machine Work, Large Vessel  
Rolling, Press Brake & CNC Plasma Cutting**

**24,000 sq. ft. Fab Shop Facilities,  
2,400 sq. ft. Paint Booth**



### **ASME Authorized Pressure Vessel Shop: Trust the Experts**

EOF has been granted by ASME the authority to construct "U", "UM", and "S" vessels, as well as to perform repairs and alterations under the National Board "R" and "NB" Stamps. These authorizations extend to both in-shop and field work.



[eastokfab.com](http://eastokfab.com)

(918) 654-7344



## **FABRICATION EXPERTS: FROM SIMPLE TO COMPLEX, WE DO IT ALL!**

Eastern Oklahoma Fabrication is a leading provider of fabrication services, catering to a wide range of industries and clients. With our extensive expertise and state-of-the-art facilities, we are equipped to handle projects of any size and complexity. From small-scale custom fabrications to large-scale industrial structures, no job is too big or too small for us. See some examples of our work. Let us assist you in bringing your ideas to life, call us today!



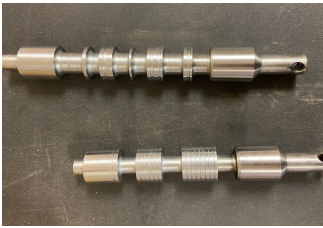
**Slug Catcher**



**H2S Scrubber**



**Skid Package**



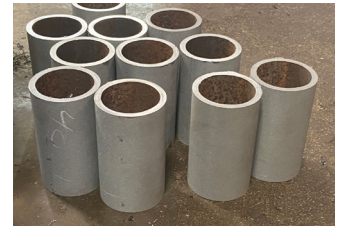
**Hydraulic Valve Spools**



**Large Diameter Machining**



**Rolled Components**



**Piping Parts With Beveled End**



**Rolled Shell**



**Pressure Vessels**



**Rectangular V-Crimp Tank**



**Detailed Machine Work**



**Rolled Cylinders**



**Pressure Vessels**



**Plasma Cut Plate**

## MACHINE SHOP EQUIPMENT

### Alltra PG14 CNC High-Definition Plasma Cutting Machine with 5-axis Bevel Cutting Capability

20'X12' cutting area, Hypertherm Pronest 2012 nesting/CAM software with auto-nesting, includes ability to cut flat patterns for pipe and HVAC fittings, and the ability to directly import most commonly used CAD file formats including Inventor, AutoCAD, and Solid Works. Hypertherm HPR 260 XD power source capable of severing 2-1/2" mild steel and production cutting 1-1/2" mild steel. Oxy-Fuel torch capable of cutting up to 8" thick mild steel. Able to make straight or beveled cuts on curved surfaces such as heads and baffles for pressure vessels or tanks.

### Dynapath 750 CNC Bed Mill

13" X 50" table size, 1700 lb table capacity.

### Dynapath DMC E-5 CNC Bed Mill

60" X 20" Table, 16-tool Automatic Tool Changer

### Lucas 3" Horizontal Boring Mill

Vertical travel: 36", 4' X 6' Table, 48" Table Travel (both axes). Equipped with adjustable power tailstock for line-boring applications. Three-axis Digital Read-Out. 20,000 lb Table Capacity.



### Sharp 24120V Lathe

120" between centers, can turn, bore, and thread up to 24" diameter, taper attachment, 4 1/8" spindle bore.

### Ikegai Lathe

20" swing, 60" between centers, taper attachment.

### Bridgeport-type Vertical Milling Machines (2 machines)

9"X 42" table. Drilling, milling, and boring, DRO equipped

### D.C. Morisson Key Seat Cutter

Used to cut internal key seats. 24" X 27" table, key sizes from 1/16" to 1-1/4".

### Knuth SSB50X Vertical Drill Press

Drilling, counter boring, reaming, tapping, and boring. Drilling capacity: 2" mild steel. Multi-rate power feed, capable of handling odd-shaped parts or drilling at an angle.

### Ridgid 1224 Threading Machine

1/4" to 4" pipe capacity, cuts both pipe and bolt threads

### 600 Ton Cincinnati Pressbrake

With the power to handle 600 tons, the Cincinnati FM600 is our go to for heavy-duty projects. The 16 foot bed on this rugged machine allows us to bend 15 feet of one inch A36 steel.

### DoAll Surface Grinder

Chuck Size: 10 3/8" X 30"

### Bortech/Bore Repair Line-boring and Bore-welding System

Capable of welding, boring & line-boring, and facing. Can be used for in-shop applications. Able to repair bores from 1 1/2" to 10" using standard attachments. Additional equipment is available to repair both larger and smaller bores.

### Haas ST-30

Wi-Fi-enabled, improved chip flow, and easier operation, the Haas ST-30 is redesigned to heighten cutting performance with spindle speed of 3400 rpm. Ergonomically enhanced to optimize workflow, this powerhouse functions at 30 hp, with a 3.0" inch bar capacity.

### Davi CNC Plate Roll E-30

Max thickness: 3/4", Max width: 10', up to 70" diameters. Roll rounds, oblongs and compound radiuses.

### Vantage Oil Country Lathe

Hollow spindle, 40-60" swing





## FABRICATION SERVICES & EQUIPMENT

### H-Frame Press, 125 Ton

Capacity: 60" high, 42" wide, used for straightening, forming, and pressing.

### Bevelmaster System

Portable pipe beveling, facing, weld prep, and counterboring performance.

### DoAll 36" High-speed Friction Band Saw

60" X 20" Table, 16-tool Automatic Tool Changer

### Ellis 1800 Horizontal Band Saw

14" flats @ 90°, 9 ½" flats @ 45° 13" rounds @ 45°,  
11" rounds @ 90°

### Ellis 3000 Horizontal Band Saw

13 ½" round @ 90°  
19" flat @ 90

### Welding

MIG, TIG, SMAW (stick). Portable and in-shop capabilities. All ferrous and non-ferrous metals. Arc gouging and Oxy-fuel cutting. (4) TIG Welders, (20) Wire-feed Welders, several are multi-process and (3) Portable Welders



### Submerged Arc Welding System

Lincoln Electric DC1000 Power Source and Pandjiris Manipulator with maximum vessel/ tank capacity of 10ft diameter and 30ft length on rails and Lincoln Electric DC650 Power Source and Manipulator with maximum vessel/tank capacity of 8ft diameter and 30ft length on rails.

### Wysong 1038 Shear

Capacity: 3/8" mild steel, 9/32" stainless steel, and maximum length of 120". Numeric controlled back gage and front gage

### Montgomery Plate Roll

Max thickness: 5/8", Max width: 60", Max thickness at full 60" width: 1/4", Min Radius 4". Round bar rolling in 1/2", 3/4", and 1" diameters

### Edwards Ironworker

Punching capacity: 1 1/16" in 5/8" mild steel, 7" throat depth

### Miscellaneous

Taylor 25,000 lb capacity forklift, misc. forklifts, and 10 ton overhead lifting capacity. Hand-powered sheet metal brakes, including a box-and-pan brake. Sand-blasting and painting services are available.

### Autodesk Inventor

3-D design software, capable of producing a three dimensional model of parts and assemblies. Ability to import and use most commonly used drawing/modeling file formats including Pro-Engineer and Solidworks. Calculation of physical features such as actual weight of a part or internal volume.

### AutoCAD Mechanical

The most widely used CAD software. To ensure optimal performance, we utilize Codeware Compress pressure vessel engineering and calculation software and emergency services to our valued clients.

### Application of Industrial Coatings, Painting, and Surface Prep

2400 square foot booth for painting and coating application. We are experienced in the application of numerous types of corrosion-protection coatings, in both spray and brush-grade application, and we have all necessary surface preparation equipment and testing equipment including hardness tester, dry film thickness tester, and holiday tester. A Clemco 600 lb sandblasting pot handles virtually all blasting jobs.

## CONTACT US

### Ray Finchum, President

Ph. 918-649-7966

Email. ray@eastokfab.com

### Billy Thompson, Project Manager

Ph. 918-654-7344

Email. billy@eastokfab.com

### Shawn Morrison, Machine Shop Supervisor

Ph. 918-654-7344

Email. shawn@eastokfab.com

### Amy Finchum, Office Manager

Ph. 918-654-7344

Email. amy@eastokfab.com



eastokfab.com

(918) 654-7344